

Teenage pregnancy Ward data for 2008/2010 – Data Update for Health Overview and Scrutiny

Background

In Oxfordshire, we have low teenage pregnancy rates, they continue to be lower than the national average and as a county, our performance is in the top 20% across the country. Much work continues to support teenagers and their carers. Our success is down to the approach we have taken, targeting wards with the highest rates in a consistent way. We need to remain vigilant and ensure that the rates remain low, especially in a few “hotspots” where the rates have not fallen as fast as in neighbouring areas.

Headlines of Ward data 2008-10

There are 10 wards in the worst 20% in England, 2 less than last year, 8 less than in 2003. These wards are

2008-10		10 LA areas		Wards in worst 20% in the country (rate of 53.1 per 1000)	
LA	Wardname	Number conceptions	2008-10 rate		
Oxford	Blackbird Leys	27	77.00		
Oxford	Northfield Brook	38	71.00		
Oxford	St Mary's	Less than 15	65.00		
South Oxfordshire	Didcot Northbourne	17	63.00		
Oxford	Rose Hill and Iffley	25	61.00		
Cherwell	Banbury Grimsbury and Castle	30	57.00		
Oxford	Iffley Fields	18	57.00		
Cherwell	Banbury Ruscote	32	57.00		
Oxford	Barton and Sandhills	25	55.00		
South Oxfordshire	Didcot All Saints	19	54.00		

8 (in yellow) are consistently in the worse 20%, two wards in Didcot dip in and out of the worst 20%. The numbers of babies born to mothers under 18 in the whole of Oxfordshire are as follows: (Note – these figures are for a three year period)

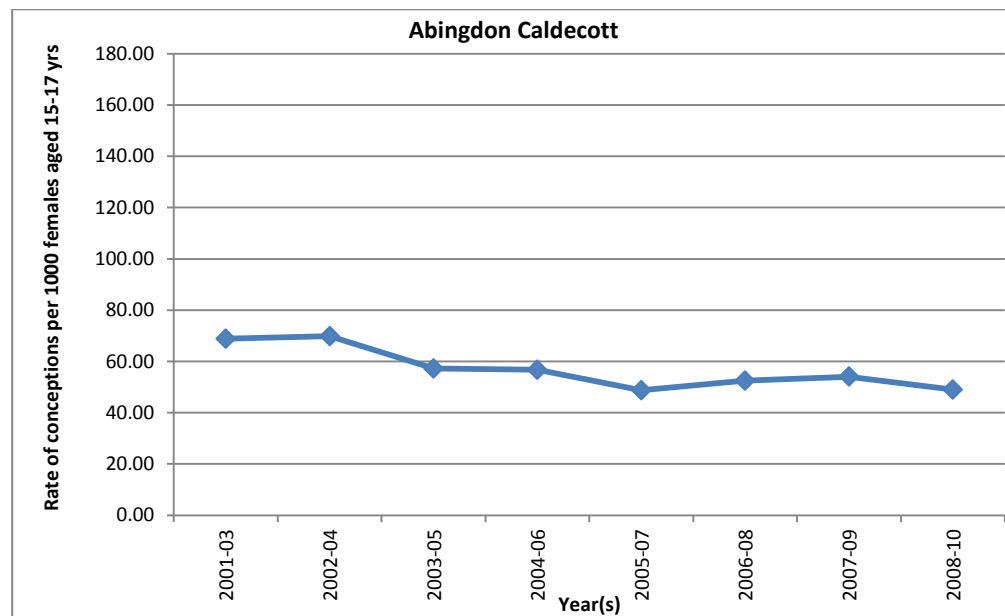
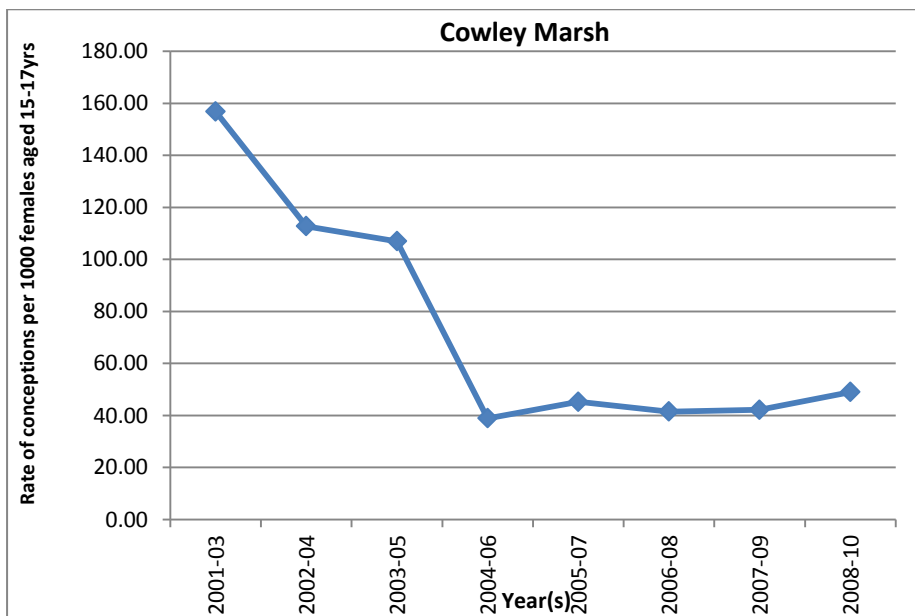
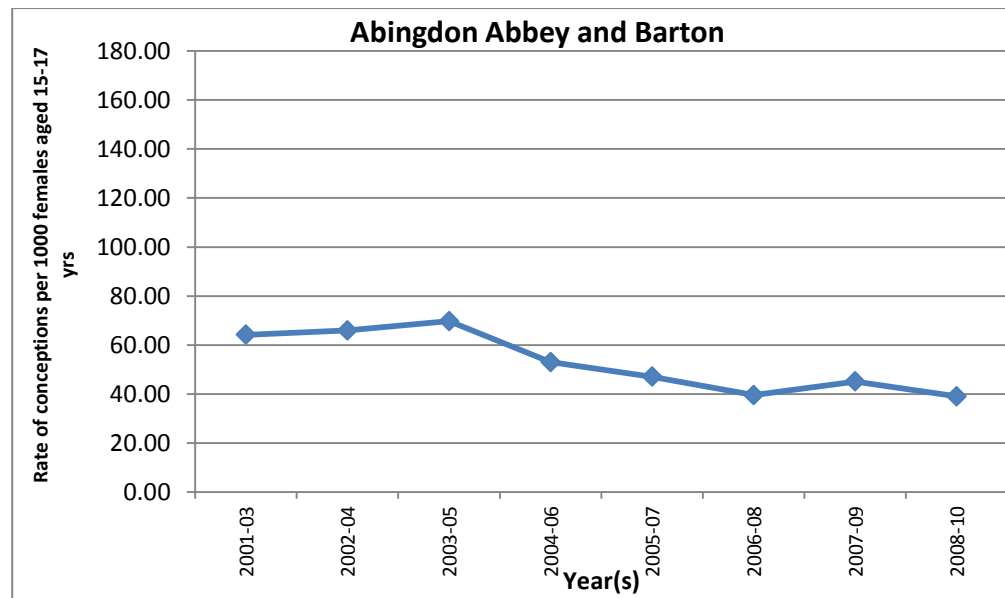
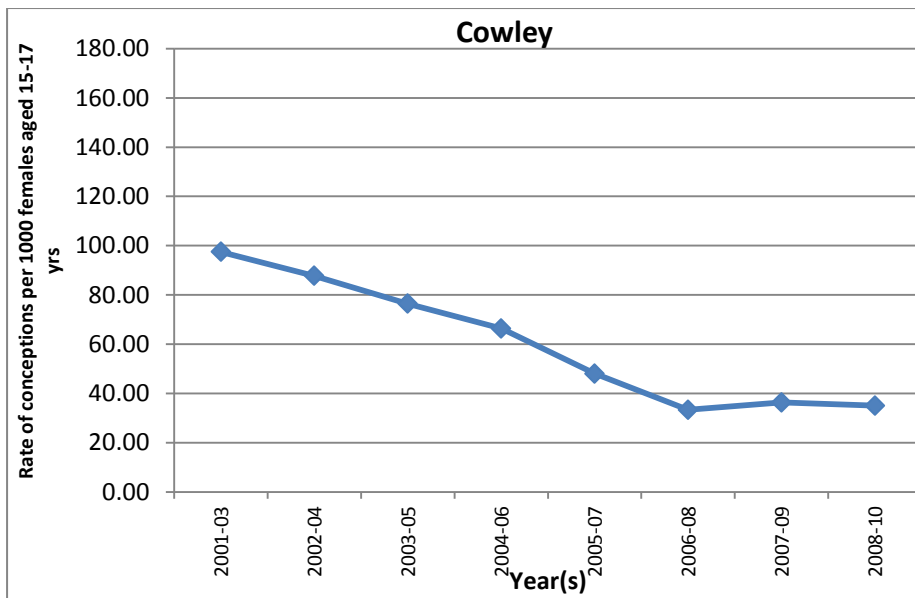
Time period	Numbers of Conceptions	Rate per 1000
2001 – 2003	NA	35.4
2002- 2004	NA	35.0
2003 – 2005	NA	34.4
2004 – 2006	1087	31.9
2005 – 2007	1061	30.4
2006 – 2008	1017	28.9
2007 – 2009	999	28.4
2008 – 2010	900	25.9

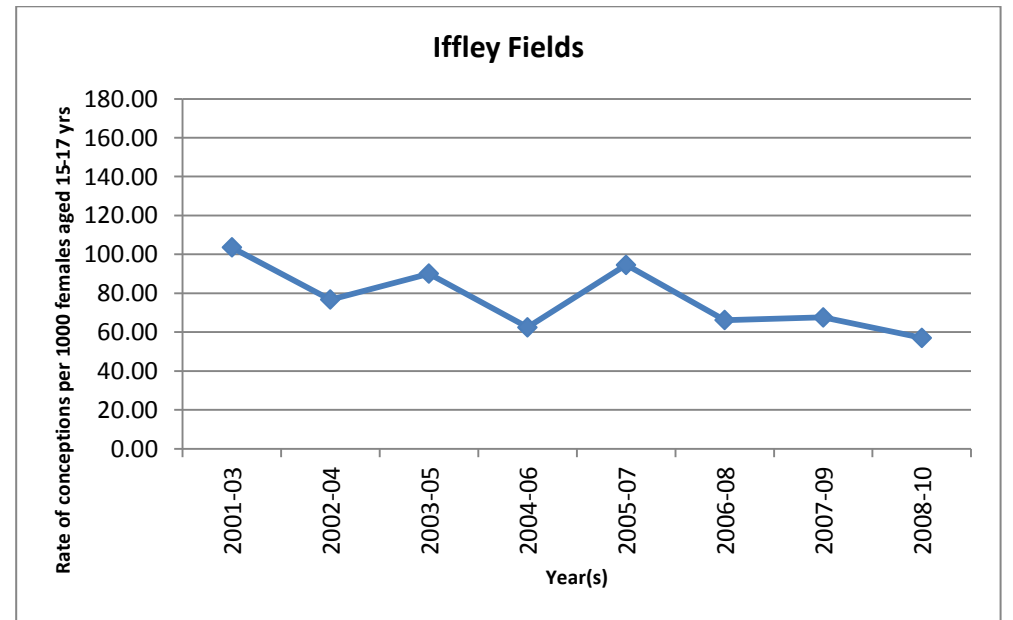
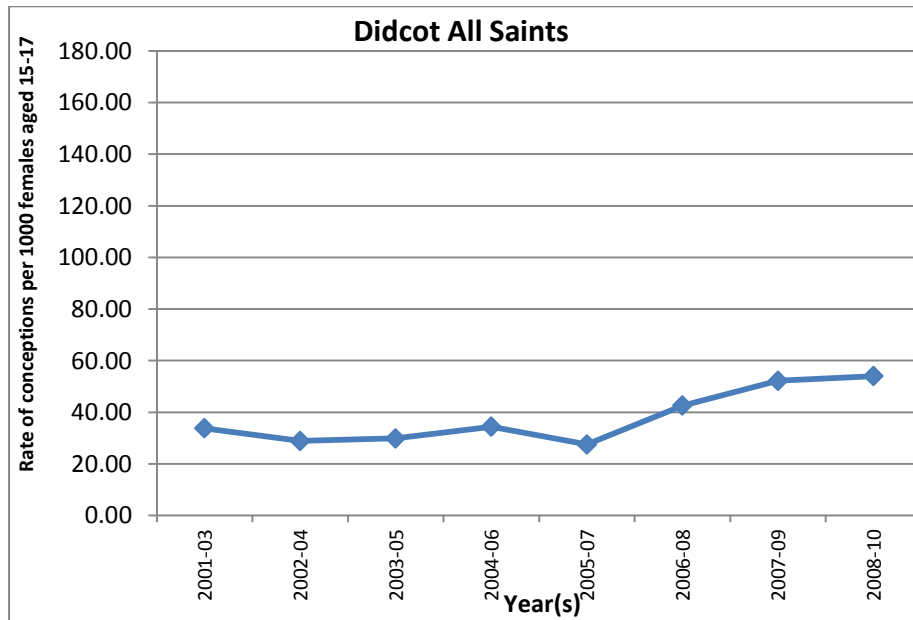
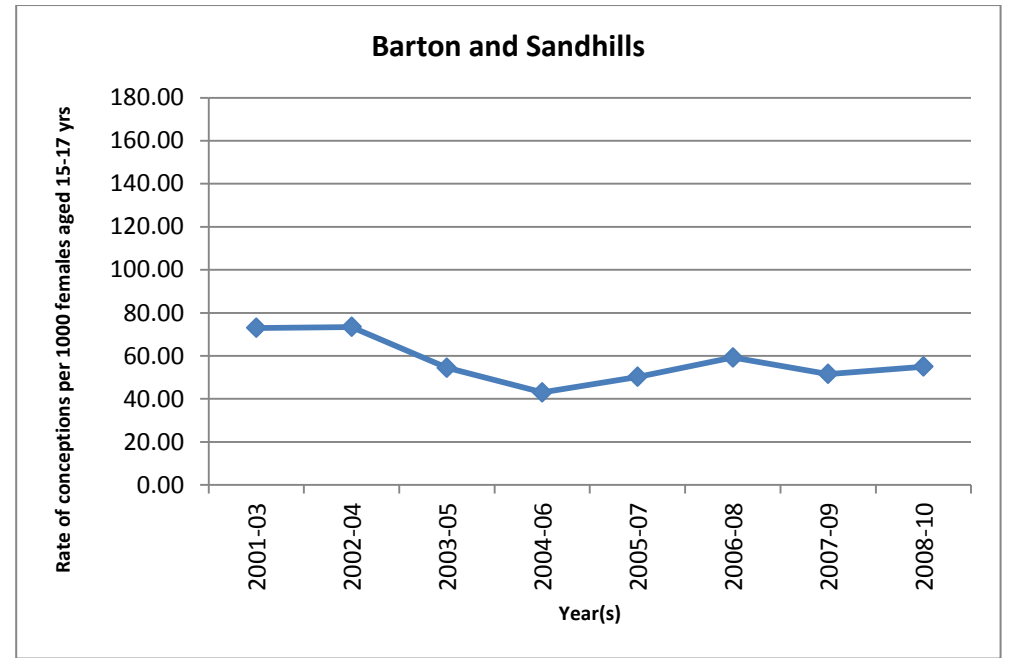
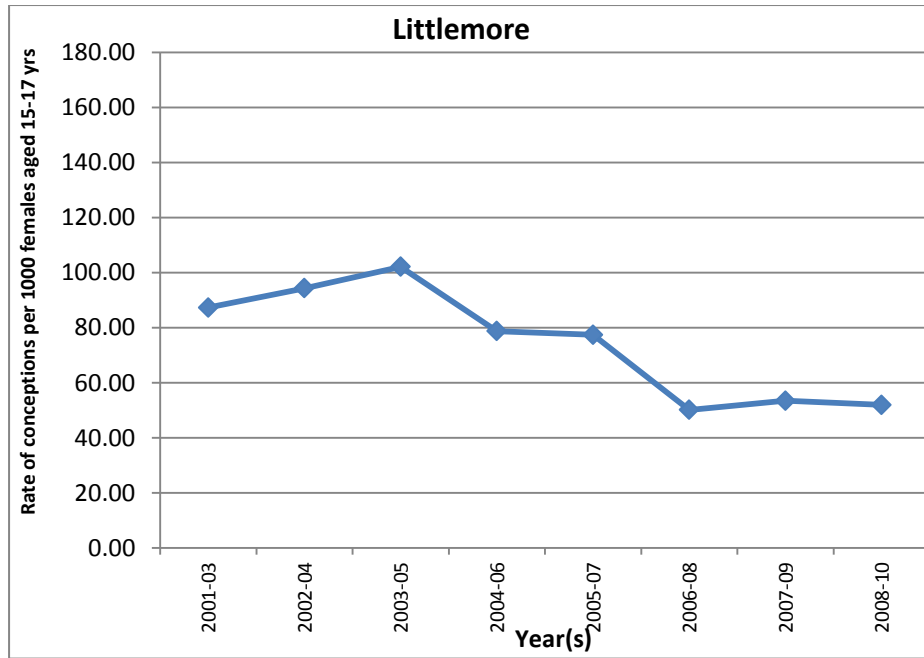
Description of the Data

Looking at the ward trend data, a very mixed picture emerges. Five wards have consistently been in the worst 20% nationally for the last eight years data reports, even though the number of conceptions have fallen considerably, (St Mary's, Iffley Fields, Blackbird Leys and Banbury Grimsbury, North field Brook). Banbury Ruscote and Rosehill and Iffley have all shown some improvement, managing to drop out of the worst 20%. Didcot Northbourne, who having dropped out of the worst 20% have made a reappearance with higher than expected rates. Wards with the highest number of conceptions are Northfield Brook and the two Banbury wards of Ruscote and Grimsbury and Castle. Didcot All Saints has very small numbers of conceptions, but an upward trend, which is cause for concern.

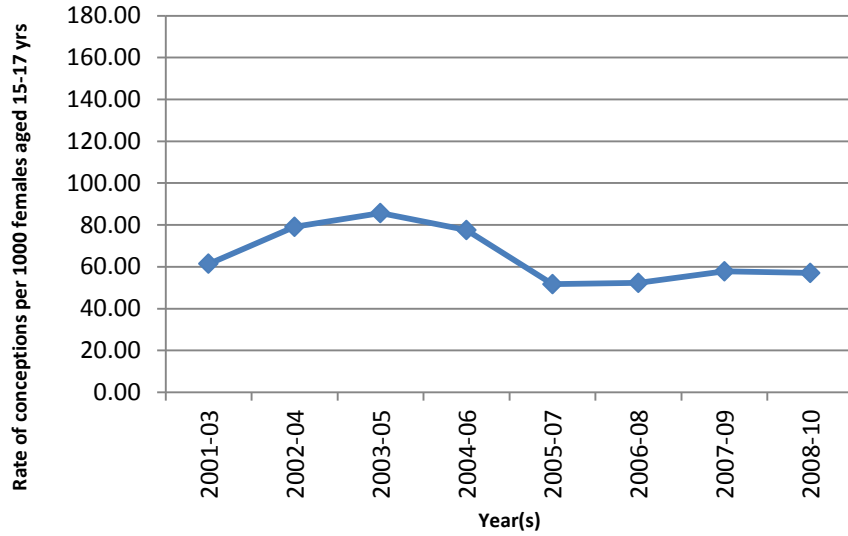
	2001-03		2002-04		2003-05		2004-06		2005-07		2006-08		2007-09		2008-10	
Ward name	No.	Rate	No.	Rate	No.	Rate	No.	Rate	No.	Rate	No.	Rate	No.	Rate	No.	Rate
Cowley	27	97.50	25	87.72	23	76.41	22	66.31	17	48.02	*	33.33	*	36.31	*	35.00
Abingdon Abbey and Barton	*	64.12	18	65.93	20	69.69	15	52.97	*	47.06	*	39.53	*	45.08	*	39.00
Cowley Marsh	25	156.80	23	112.75	23	106.98	15	38.88	*	45.25	*	41.47	*	42.19	*	49.00
Abingdon Caldecott	19	68.85	22	69.84	17	57.24	16	56.74	15	48.70	16	52.46	16	54.05	*	49.00
Littlemore	30	87.35	30	94.34	33	102.17	27	78.81	22	77.46	*	50.18	16	53.51	16	52.00
Barton and Sandhills	31	73.00	26	73.45	20	54.50	17	42.99	20	50.25	24	59.26	22	51.52	25	55.00
Didcot All Saints		33.80	*	28.87	*	29.89	12	34.423	*	27.55	15	42.61	18	52.17	19	54.00
Iffley Fields	29	103.56	26	76.70	30	90.09	24	62.50	26	94.55	19	66.20	20	67.57	18	57.00
Banbury Ruscote	39	61.40	46	79.04	49	85.66	42	77.52	29	51.69	30	52.26	33	57.79	32	57.00
Rose Hill and Iffley	21	56.84	24	63.49	25	73.75	23	58.88	17	46.83	17	45.45	23	57.93	25	61.00
Banbury Grimsbury and Castle	35	77.86	45	103.45	44	100.46	51	103.91	49	99.19	48	95.81	41	77.95	30	57.00
Didcot Northbourne	21	68.74	18	58.25	*	36.18	*	28.07	*	43.64	*	43.80	18	65.69	17	63.00
Blackbird Leys	34	84.30	29	83.33	32	80.40	27	65.69	24	59.11	21	54.00	22	60.44	27	77.00
St Mary's	23	164.07	23	90.20	19	80.51	17	80.19	16	72.40	16	76.56	*	68.63	*	65.00
Northfield Brook	33	100.71	33	98.21	29	81.01	34	81.30	30	63.29	39	79.27	39	75.14	38	71.00

* = Number not given, less than 15

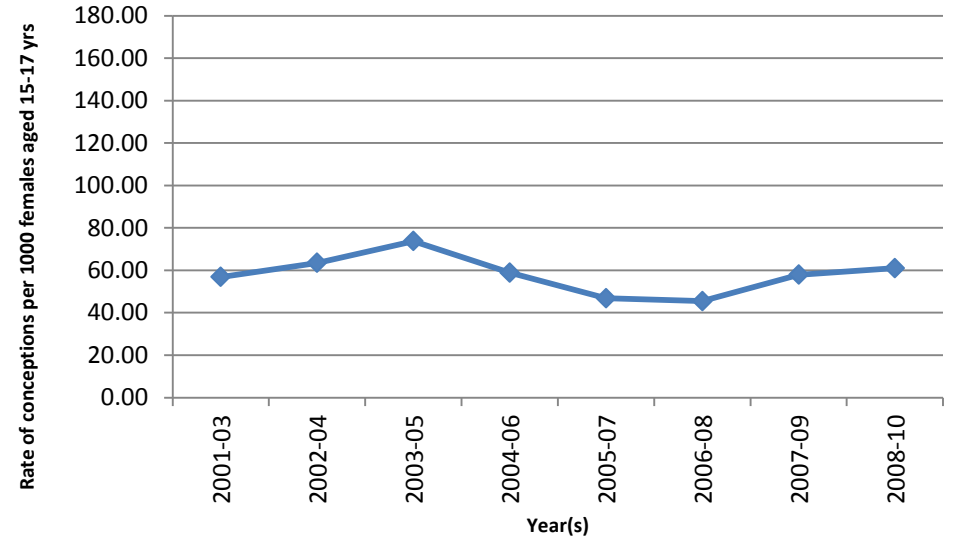




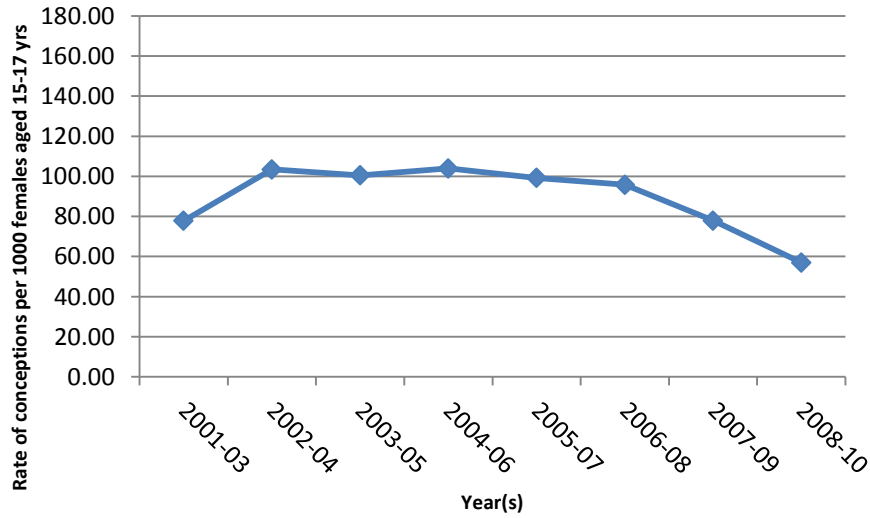
Banbury Ruscote



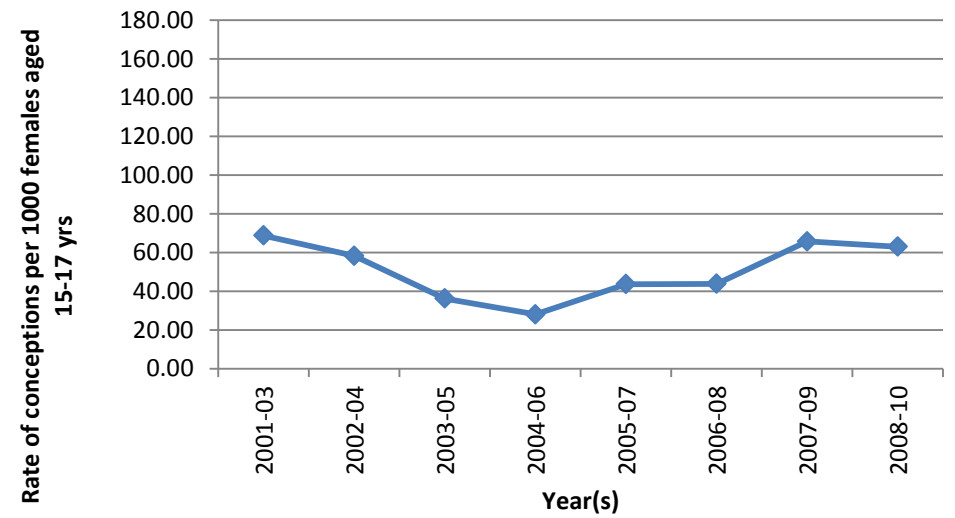
Rose Hill and Iffley

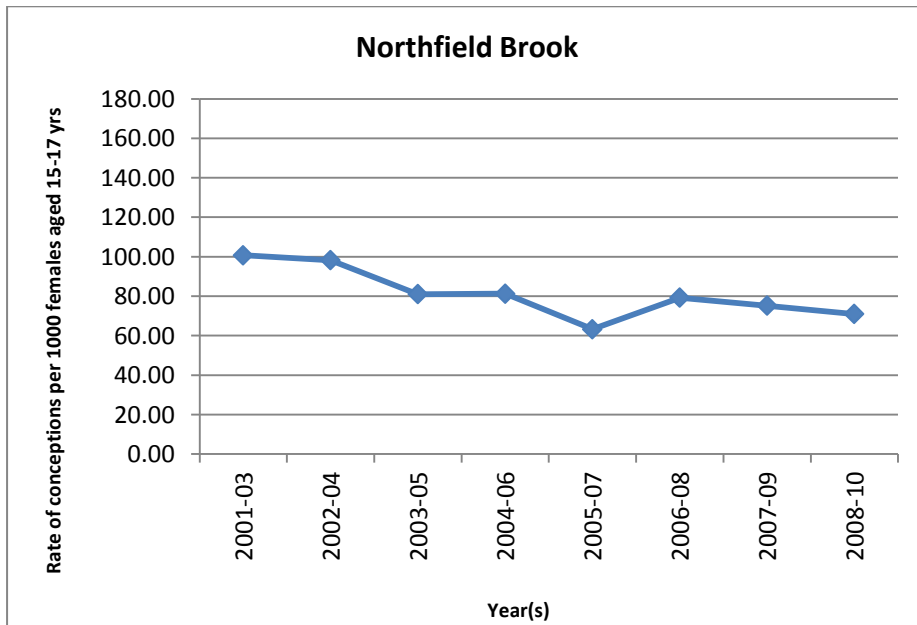
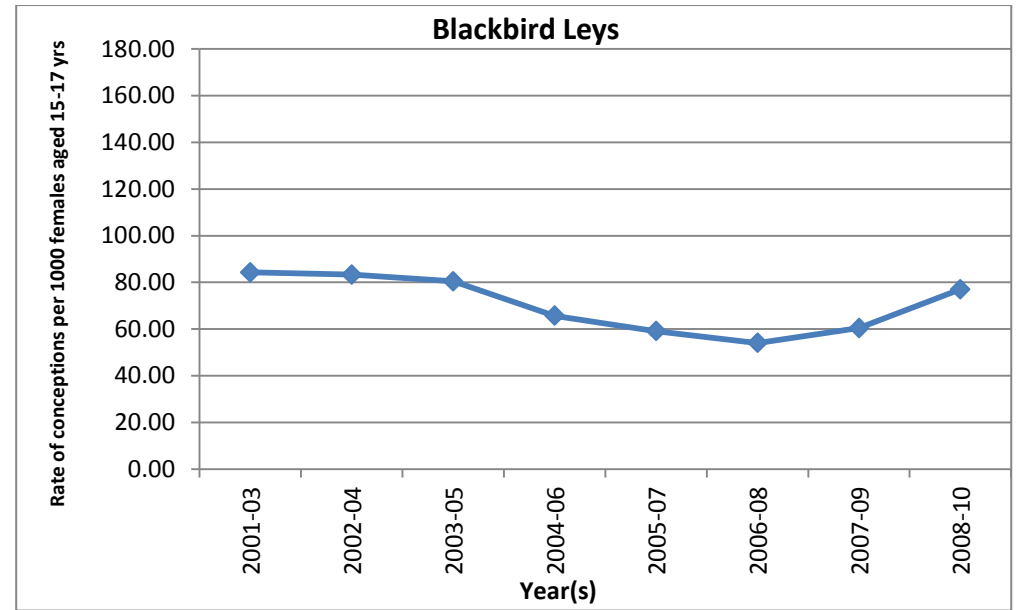
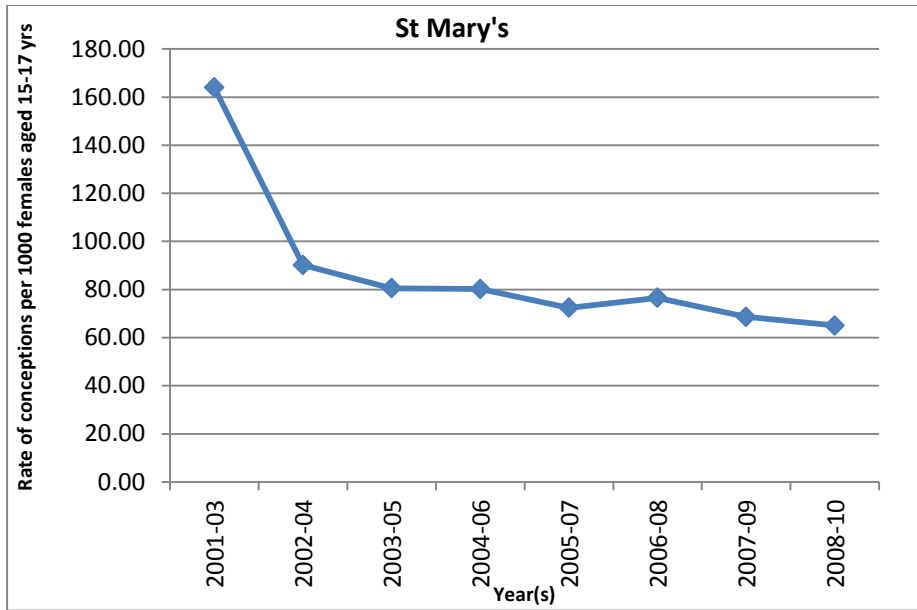


Banbury Grimsbury and Castle



Didcot Northbourne





Summary of the trend Data

It can be seen that in most wards the trend is downwards. However, in a few wards numbers are not falling and although we are talking about a very small number of births in a three year period, the rate of conceptions per 1000 15-17 year olds have not dropped.

The wards which cause most concern are

- Rose hill and Iffley
- Blackbird Leys
- Banbury Ruscote
- Didcot Northbourne

Current Work Programmes

The priorities for reducing teenage pregnancy at the moment are

- Work with teenage fathers
- Develop further the maternity care pathways
- Redesign Sex/relationship Education programme
- Ensure young people receive good clear messages about keeping sexually healthy
- Reduce second pregnancies to women who have conceived as teenagers
- Developing further the S-Card/C-Card schemes

Recommendations for future work

- Continue with the targeted approach already taken
- Further analysis of the data for the Didcot area and develop a targeted workplan

Angela Baker
Consultant Public Health

Sarah Breton
Lead Commissioner, Children & Young People

Donna Husband
Health Improvement Principal

Claire Dodwell
Commissioning Manager,
Children & Young People

On Behalf of
Jonathan McWilliam
Director of Public Health

September 2012